

I-STONE

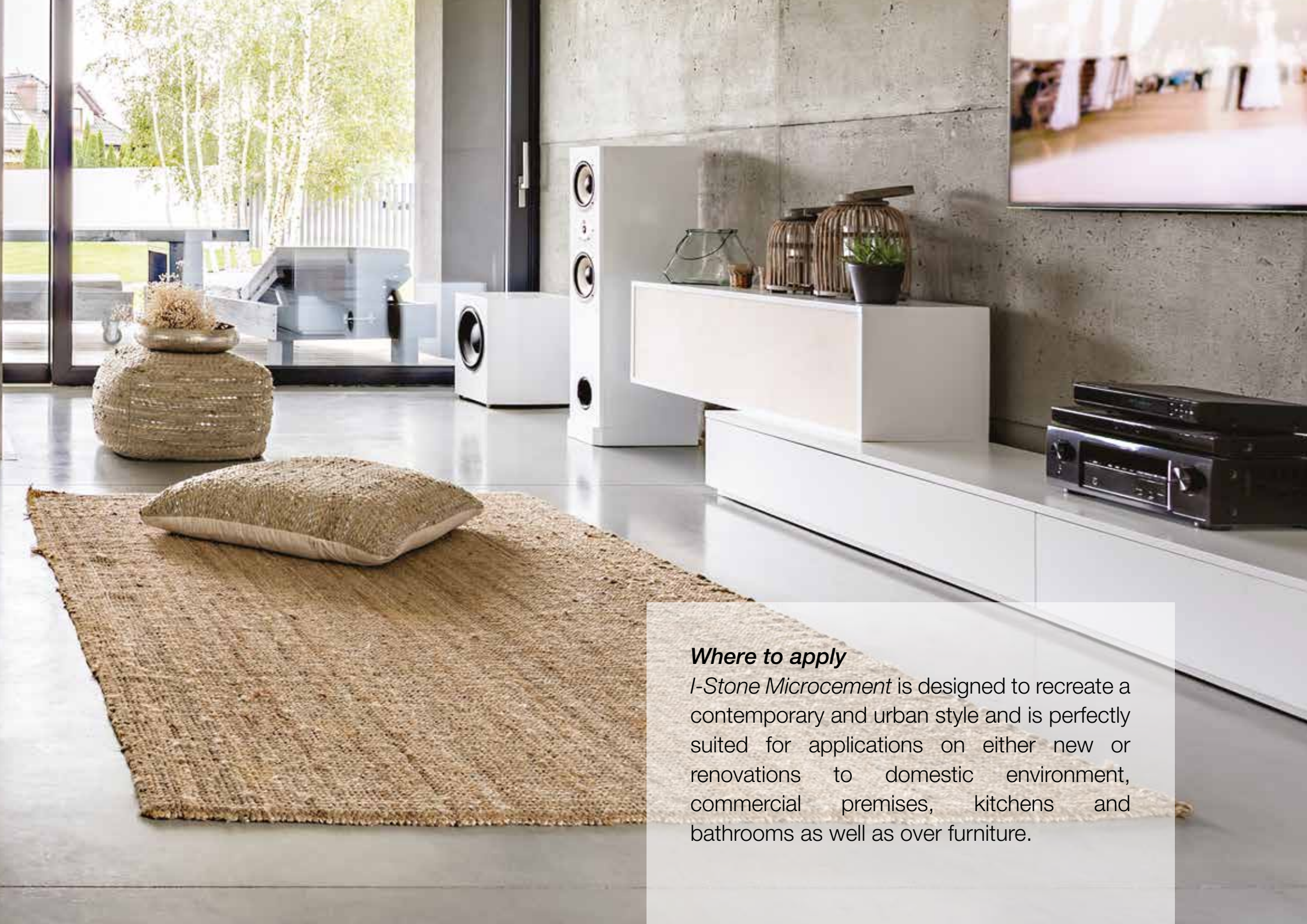
MICROCEMENT

SEAMLESS CONTINUOUS SURFACES

A DVANCED
Spirito Libero



The *I-STONE MICROCEMENT* system has a wide range of solutions that combine aesthetic and practicality. The unique formulation of cements, selected aggregate, special binders and natural earthy oxide allows to create pleasant, resistant, durable and fast to lay seamless continuous surfaces.



Where to apply

I-Stone Microcement is designed to recreate a contemporary and urban style and is perfectly suited for applications on either new or renovations to domestic environment, commercial premises, kitchens and bathrooms as well as over furniture.



1D

1



1A



1B



1C



1D



I-STONE MICROCEMENT

Excellent insulation, scratch resistance, waterproof, fast to lay , versatile and low maintenance is what define this unique product .

An innovative decorative product that convey the importance and elegance of the space.

Colours

An off white base to be mixed with 9 unique natural oxide colours to get up to 33 different colour shades. This tinters are designed to give the best natural earthy finish to the end product creating a burnished concrete look or a polished stone finish.

Finish

I-stone sealer give the end product a nice velvety satin finish.

2A



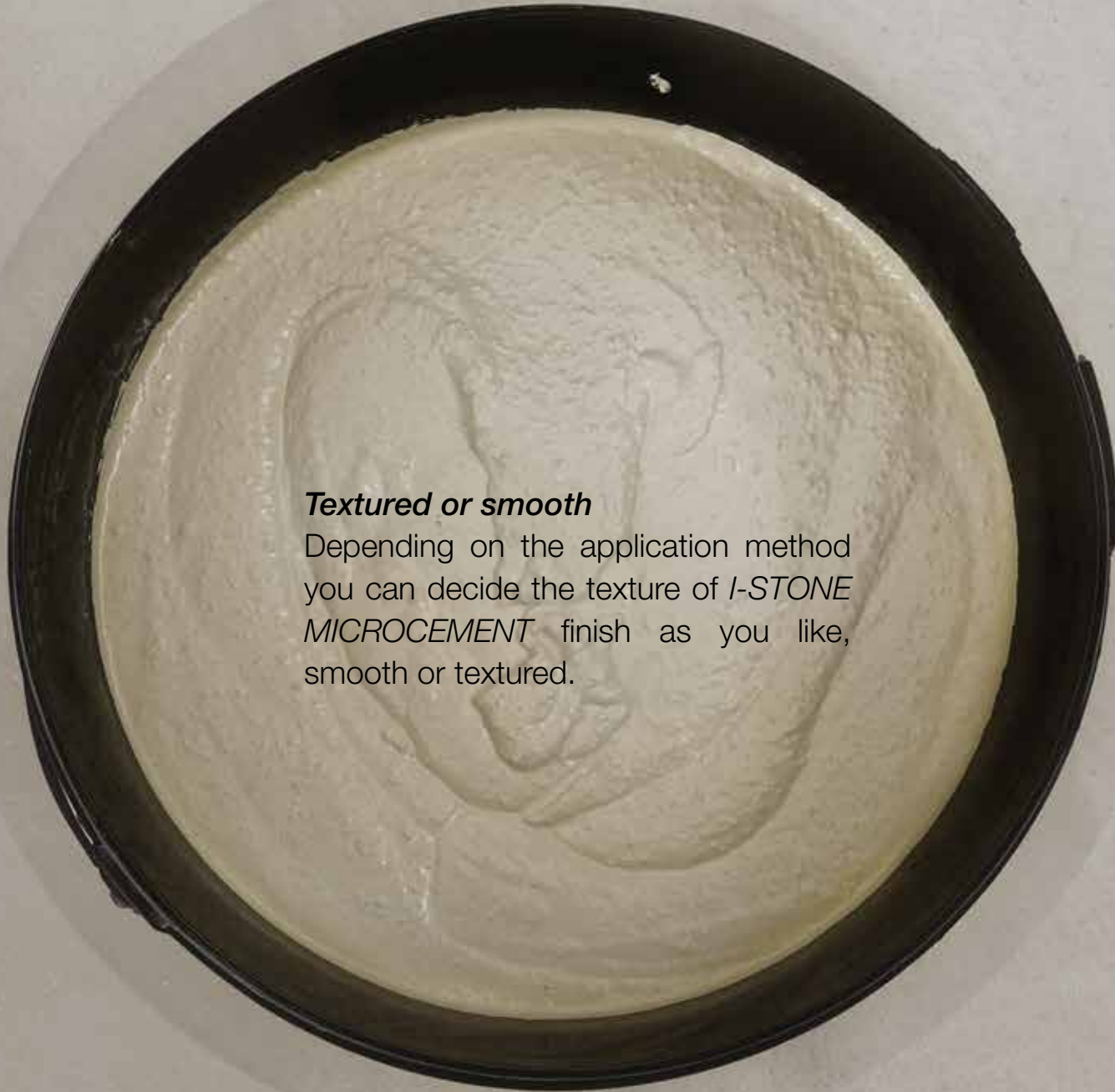
2B



2C



2D



Textured or smooth

Depending on the application method you can decide the texture of *I-STONE MICROCEMENT* finish as you like, smooth or textured.

4A



4B



4C



4D



Without limits

Without limits: from interiors, walls, floors, ceilings, objects of any size and materials.

Sustainability

I-STONE MICROCEMENT is a product for sustainable architecture because is environmental friendly due to its VOC free , permeable to vapour, moisture resistance therefore a low environmental impact. Once sealed with *I-Stone Sealer* it becomes totally waterproof ideal for bathrooms, splashback and wet area.





6

6A



6B



6C



6D



6A



5



5A



5B



5C



5D

5C

Craftsmanship

Flexible by nature the mixture is prepared for each individual use mixing natural oxide tint with a blend of selected minerals, cement and special binders. The paste is then applied by trowel by a skillful artisan to give the final polished stone look.



7A



7

7A

7B

7C

7D



4B



Continuity

Continuity is one of the great advantage of *I-STONE MICROCEMENT* to unleash creativity on floors and walls without having to worry again about grout and joints.

Cleaning and Maintenance

Use of a cloth dampened with water and / or a neutral, non-foaming floor detergent for cleaning of *I-STONE MICROCEMENT* will be sufficient.

It is advisable to use periodically self-polishers products (such as waxes), quickly remove any stains of liquids such as wine, oil or vinegar, in order to avoid any deep penetration of *I-STONE MICROCEMENT* surfaces. It is advisable to use woolen cloths or dish cloths on *I-STONE MICROCEMENT* floors under heavy furniture bases in case of moving of furniture, or whitewashing walls.

Keep the surface regularly cleaned by passing a normal broom or vacuum cleaner, a doormat at the entrance will limit the introduction of sand or other abrasive materials.

3A

3A

3B

3C

3D

3



Innovation

I-STONE MICROCEMENT in only 3 mm thick can cover any type of surface, thanks to special adhesion properties never seen before. It is a highly resistant material even to the most extreme chemical agents to facilitate cleaning. The incredible resistance and ability to be customized in every aspect make *I-STONE MICROCEMENT* unique and innovative.

Flexibility


Due to its special formula *I-STONE MICROCEMENT* system allows up to 10 degrees flexibility.

Training

To guarantee excellent results we have organized a permanent and stratified training throughout the territory, with specialized applicators, able to meet every customer needs.

9

Titanium white



1

2

3

4

1A



2A



3A



4A



1B



2B



3B



4B



1C



2C



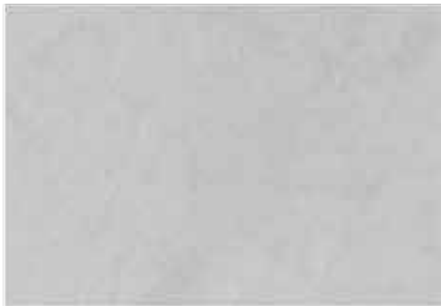
3C



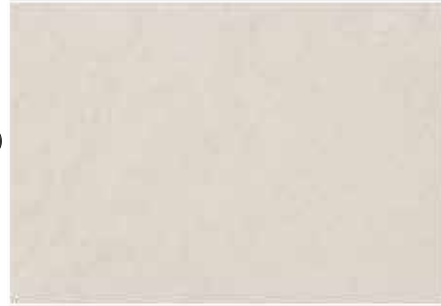
4C



1D



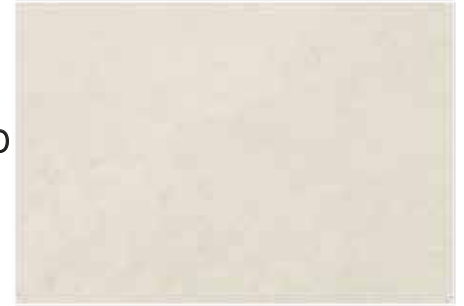
2D



3D



4D



5



5A

6



6A

7



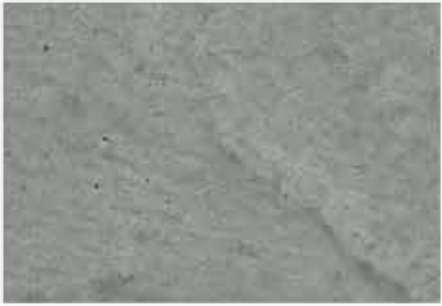
7A

8



8A

5B



6B



7B



8B



5C



6C



7C



8C



5D



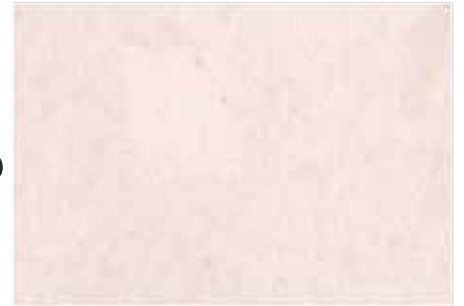
6D



7D



8D



Technical sheet

FLOOR & WALL

SEAMLESS CONTINUOUS SURFACES

Microcement Cementitious based, single-component product, coating for floors, and walls and coatings. It can be applied on any type of surface (even tiles) thanks to the low thickness of 2-3 mm, with the possibility of creating continuous solutions, walls-flooring. Available in 33 colours of chart and polished and satin finishes. Applicable in any environment thanks to the impermeability guaranteed by the finish.

Its characteristics make it suitable for covering walls and floors, indoors, in particular environments for:

Characteristics

Purpose

• civil use; • wet areas; • Industrial; • health; • Food; • commercial.

I-STONE PRIMER

Adhesion promoter primer based on acrylic resins and siliceous inert, with low emission of volatile organic compounds (VOC), ready to use. I-STONE PRIMER guarantees an ideal rough hooking surface, ensuring excellent adhesion even on smooth or low-absorbing surfaces such as tiles and marbles. It can be applied by brush or spatula on concrete, bricks, plasterboard, wood, cellular cement, ceramic, paint, plaster.

I-STONE BASE COAT

Base coat in microfibrated paste based on resins, mineral aggregates with appropriately balanced granulometry and special additives to improve their applicability and performance. With the addition of water it creates a creamy mixture with high flexibility, resistance and adhesiveness. We recommend two coat by embedding fiberglass mesh between coat.

System's Products

MICROCEMENT I-STONE

Single-component premixed powder Stucco formulated with special cements, resins, special additives and quartziferous aggregates. It is a product that allows to obtain continuous spatulate effects both for walls and floors.

I-PORES FILLER

Adhesion promoter primer based on acrylic resins, with low emission of volatile organic compounds (VOC), ready to use. I-PORES FILLER guarantees excellent adhesion and manages to close the micro-pores of microcement, facilitating the action of I-STONE SEALER.

I-STONE SEALER

Two component transparent water-based polyurethane finish, available in SATINED versions. The product must be catalyzed with component B. Mix Component A well before joining Component B. The pot-life of the product is 1 hour at max, do not use the product after this time. The product does not become yellow and is resistant to UV rays. To reach the final properties it is necessary to wait 7 days. Temperature and humidity can affect the times of filming and drying.

SURFACE PREPARATION

The surfaces must be well compact and cohesive, clean, dry, free of oils, greases, dust, waxes, silicones, sealants or any element that could affect the adhesion of the system, any film of old paint must be removed if not perfectly compact and adherents. Any missing portions, holes, cavities, cracks and lesions must be previously filled up with special mortars and the reconstructed area must be left to mature for the necessary time according to the thicknesses.

In case of jobs over tiles, sand back, clean dirt and dust and apply I-stone primer, than I-stone basecoat(alternatively Primus Aggrappante) Do not apply on damp substrates ≤4%.

Surface Preparation

In the case in which it is necessary to resin on a floor with tiles, it will be necessary to carry out a preparation cycle before resin-coating in order to create a starting surface free of joints and capable of adhering the successive layers. The preparation cycle can be carried out by sanding, peening or abrasion of the support. Do not apply on damp substrates.

In the case of radiant floors, the system must be kept switched off from the 7th day before the beginning of the installation until the 7th day following completion of the works.

In the case of a new screed, leave the support to cure at least 28 days before applying the cycle.

To prevent prolonged stagnation of water on the treated surfaces, it is advisable to foresee the correct slopes.

Technical data I-STONE PRIMER

Colors	Grey
Appearance	Creamy
Package	2.5 – 5 - 15 lt
Binder	Synthetic resins in emulsion
pH	8 +/- 0.5
Granulometry	maximum 0.3 mm
Application temperature	from 5 ° to maximum 35 °
Adhesion on ceramic	MPa> 2 (ASTM D 4541)
Adhesion on concrete	MPa> 1.5 (ASTM D 4541)
Yield	0.2 lt / sqm
Solvent	water
Dilution	5 -10% with water
Cleaning of Tools	with water

Technical data I-STONE BASE COAT

Colors	White
Appearance	Dust
package	20 kg
Binder	Synthetic resins and special cements
Solid residue	100%
Specific weight	1.2 kg / dm3
Granulometry	maximum 0.6 mm
Flexural strength	MPa 9 +/- 2 (EN 1015-11)
Compressive strength	MPa 25 +/- 5 (EN 1015-11)
Application temperature	from 5 ° to maximum 35 °
Dough life time	3 hours
Foot traffic	24 hours
Maximum thickness	2 mm
Yield	3 kg / sqm
Solvent	water
Dilution	25% with water
Cleaning of Tools	with water

Technical data MICROCEMENT I-STONE

Colors	White
Appearance	Dust
Package	20 kg
Binder	Synthetic resins and special cements
Solid residue	100%
Specific weight	1.2 kg / dm3
Granulometry	maximum 0.3 mm
Flexural strength	MPa 9 +/- 2 (EN 1015-11)
Compressive strength	MPa 25 +/- 5 (EN 1015-11)
Application temperature	from 5 ° to maximum 35 °
Dough life time	3 hours
Foot traffic	24 hours
Maximum thickness	2 mm
Yield	2.5 kg / sqm
Solvent	water
Dilution	25% with water
Cleaning of Tools	with water

**Technical data
I-PORES FILLER**

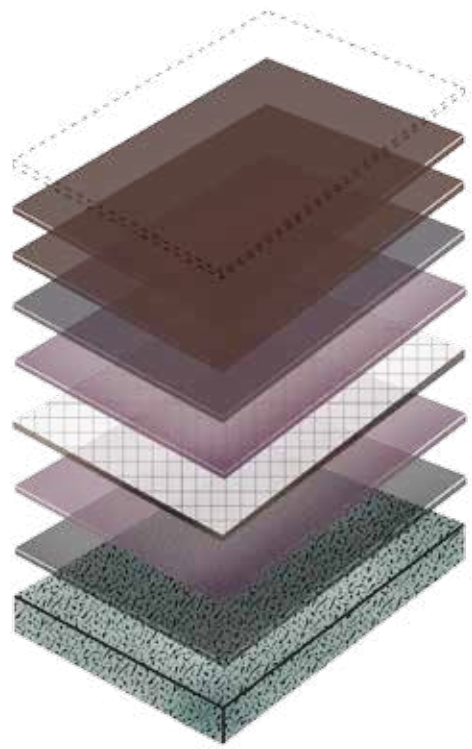
Colors Transparent
Appearance Creamy
Package 2,5 – 5 - 15 lt
Binder Synthetic resins in emulsion
pH 8 +/- 0.5
Granulometry maximum 0.3 mm
Application temperature from 5 ° to maximum 35 °
Adhesion on ceramic MPa> 2 (ASTM D 4541)
Adhesion on concrete MPa> 1.5 (ASTM D 4541)
Yield 0,150 lt / sqm
Solvent water
Dilution 5 -10% with water
Cleaning of Tools with water

**Technical data
I-STONE SEALER**

Colors Transparent
Appearance Liquid
Finish Satin
package 1 - 5 – 10 kg (A + B)
Binder Polyurethane water resins
Solid residue 65-70%
Specific weight 1,0 kg / lt
Adhesion MPa> 1,5 (ASTM D 4541)
Abrasion (1kg-1000giri CS10) <28 mg "T" (ASTM d 4060)
Shore surface hardness <98 A
Taken dirty <low (UNI 10792)
Resistance to washing excellent (UNI EN ISO 11998)
Resistance to alkaline degreasing agent no alteration (UNI EN ISO 2812-1)
Resistance to disincrostant acid no alteration (UNI EN ISO 2812-1)
Resistance to disinfectant no alteration (UNI EN ISO 2812-1)
Application temperature from 5°C to maximum 35°C
Mix life time 1 hour
Foot traffic 24 hours
Yield 100 gr./sqm
Solvent water
Dilution 10% with water
Cleaning of Tools with water

Recommendations

• Use the product on clean, dry surfaces that are not contaminated by mold, fungus or bacteria.



- STEP 7 ○ I-STONE SEALER
- STEP 6 ○ I-PORES FILLER
- STEP 4 ○ MICROCEMENT I-STONE
- STEP 5 ○ MICROCEMENT I-STONE
- STEP 3 ○ I-STONE BASE COAT
- NET
- STEP 2 ○ I-STONE BASE COAT
- STEP 1 ○ I-STONE PRIMER
- SUPPORT

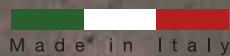
1 Kg / I-STONE MICROCEMENT
(including water)

Shade A	30 ml
Shade B	8 ml
Shade C	2,5 ml
Shade D	0,8 ml
White	30 ml

25 Kg / I-STONE MICROCEMENT
(including water)

750 ml
200 ml
62,5 ml
20 ml
750 ml

ADVANCED
Spirito Libero



Shop/Showroom 34/324 Settlement road
Thomastown 3074
email: mariospeziari2@hotmail.com
Mob: 0409604448
www.venetianplastershop.com.au
www.advancedspirito.libero.com.au